

## MARKIES \_ Eduard Böhlingk / The Netherlands

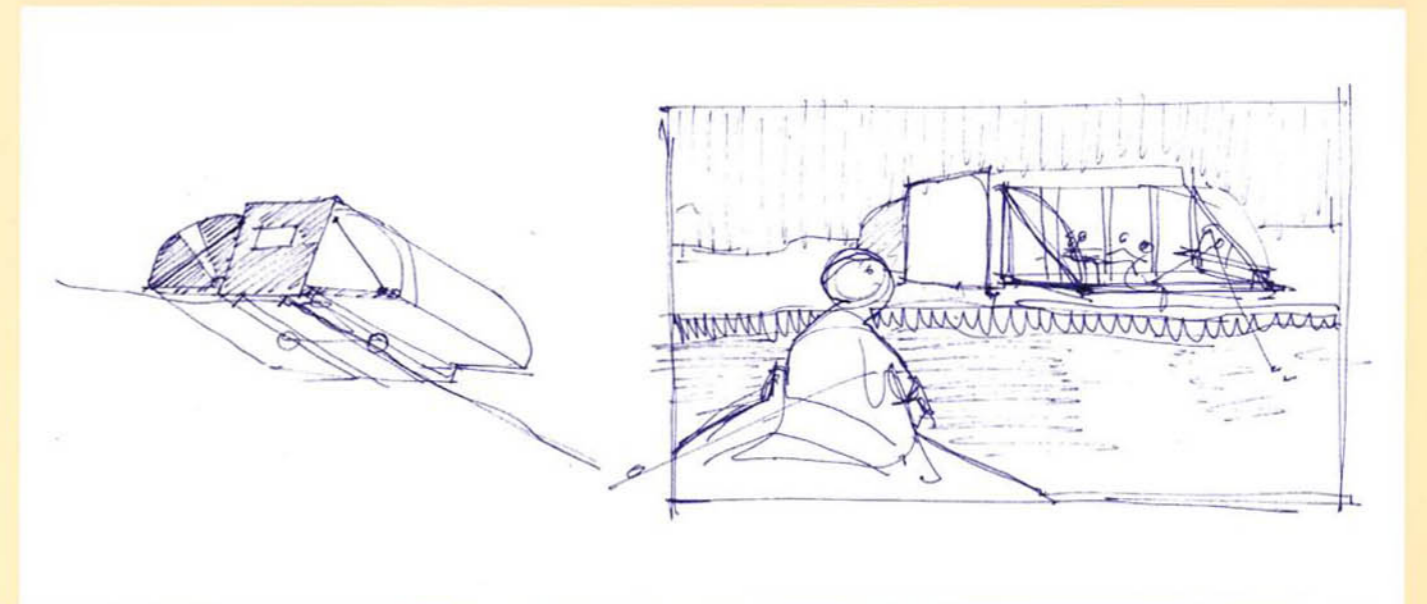


Architect: Eduard Böhlingk, Maasland, Netherlands  
Size: 2.20 x 4.40 x 2.90 m, unfolded 6.60 x 4.40 x 2.90 m  
Design: 1986  
Completion: 1995  
Photographer: Roos Aldershoff

The Markies was awarded the Public's Choice Dutch Design Prize 1996.

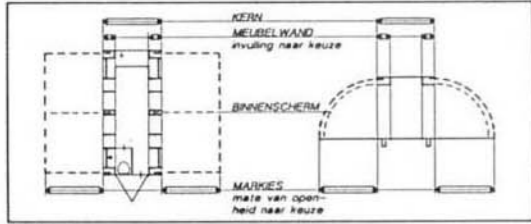
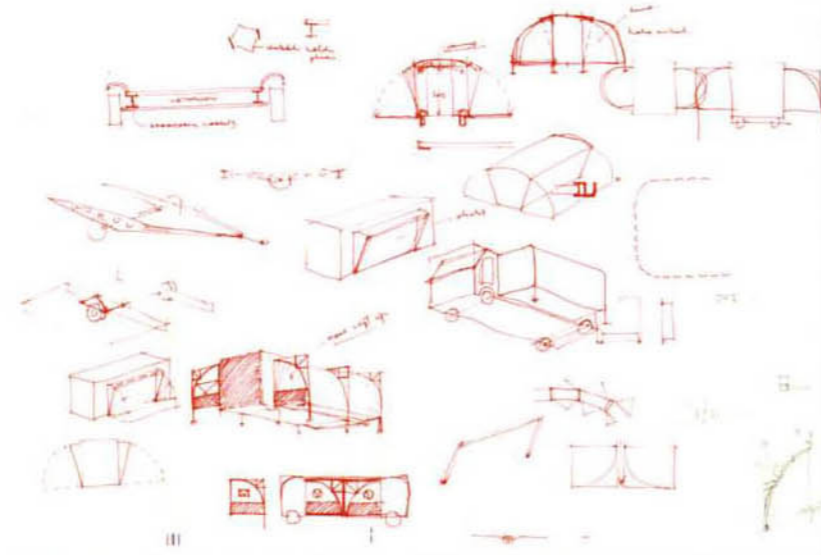
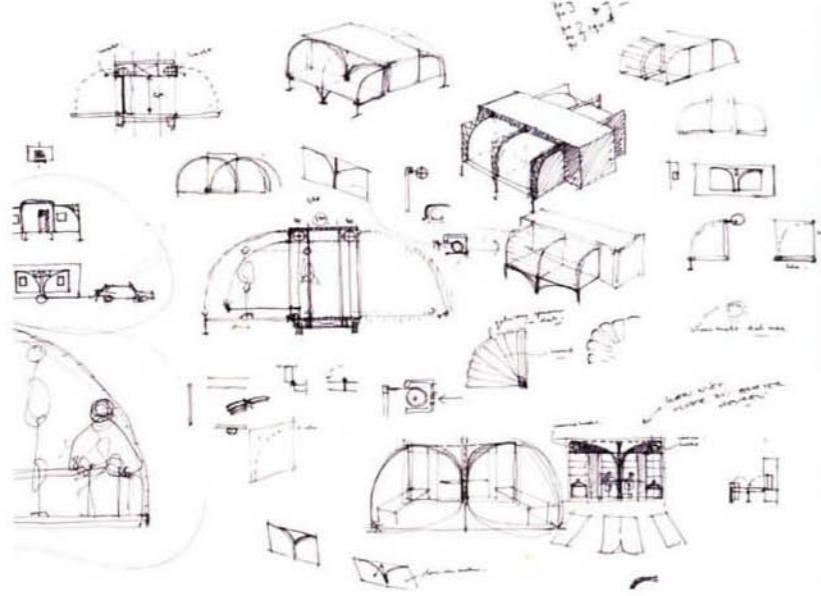
Since 2002 the Markies is part of the traveling exhibition "Living in Motion" by Vitra.

The Markies is not an ordinary caravan, but it can serve as one because it meets all the B-road transport requirements. It was an entry for a temporary dwelling competition and was conceived as a mobile holiday home. When it is on the road, the Markies measures 2.20m by 4.40m. Once it arrives at its destination, its floor space can be increased threefold in a matter of seconds. Both side walls can be folded down electronically and the resulting area can then be covered automatically via the concertina-like awnings, which can be lowered to exactly the height desired. The living space is thus divided into three zones: in the middle there is the kitchen, dining area and wc, on one side the living room with its transparent dome - which doubles as a terrace in good weather when the awning is raised - and on the other the bedroom, which can be split into smaller units and is covered by an opaque awning. The space inside has a flexible layout and includes all the essential facilities: fitted cupboards, benches, up to four beds, a refrigerator, a cooker and a shower/toilet.

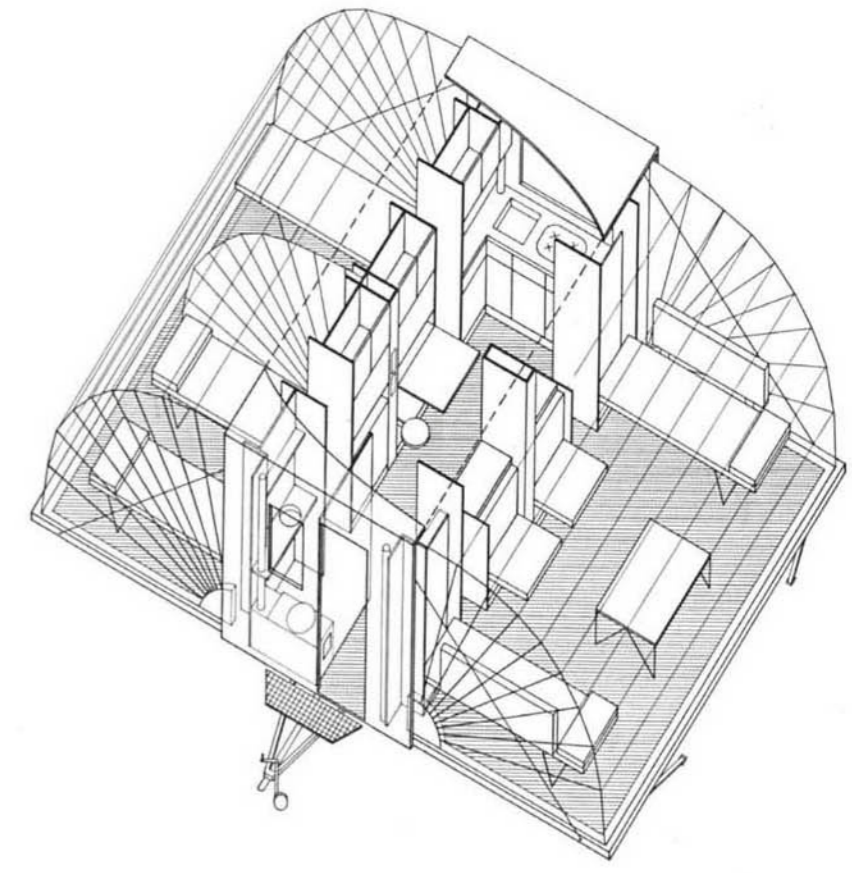
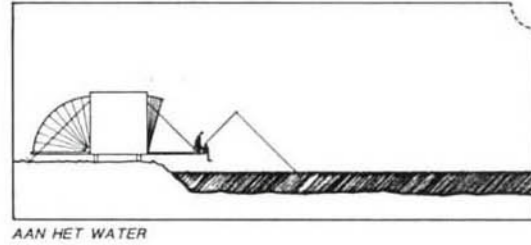
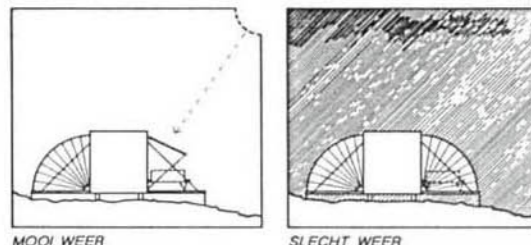
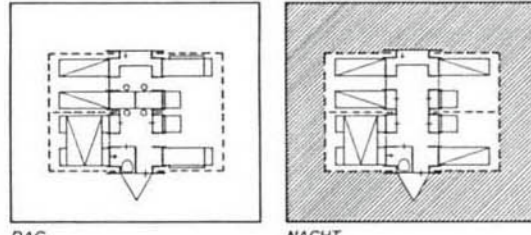
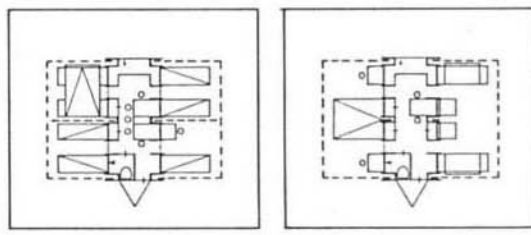




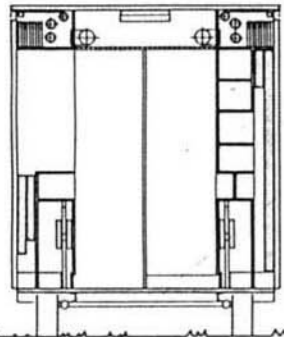
Markies는 단순한 이동식 주택이 아니라, B-도로 운송의 모든 요구사항을 만족시키며 통합적 서비스를 제공한다. 이것은 임시 주거에 관한 꿈에 참가하였으며, 이동식 휴가 주거라 할 수 있다. 도로에서 이동 중에 Markies는 2.20m×4.40m의 크기이다. 그러나 도착지에 다다르면 몇 초 만에 바닥 공간이 세 면으로 확장된다. 양 측면은 천기를 이용해 펼쳐지며, 이에 따라 늘어난 면적은 컨서티나(아코디언의 일종)와 비슷한 형태의 차양을 통해 자동적으로 덮인다. 이 차양은 원하는 높이까지 정확하게 내려온다. 거주공간은 세 부분으로 구분된다. 가운데 공간에는 주방과 식당, 그리고 화장실이 있으며, 측면에는 투명한 돔으로 된 거실이 있다. 날씨가 좋으면 차양이 올라가 테라스는 두 배로 확장된다. 반대 측면에는 침실이 있다. 이는 작은 단위로 나뉘어져 불투명한 차양으로 덮여 있다. 내부 공간은 유연한 레이아웃으로 구성되어 있으며, 모든 필수시설들이 내포되어 있다. 예를 들면, 불박이식 장, 의자, 최대 4개의 침대, 냉장고, 요리 기구, 그리고 샤워/위생도구 등이다.



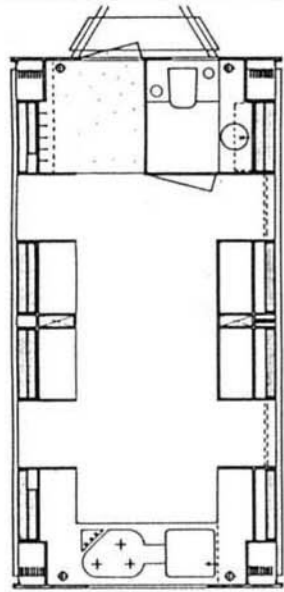
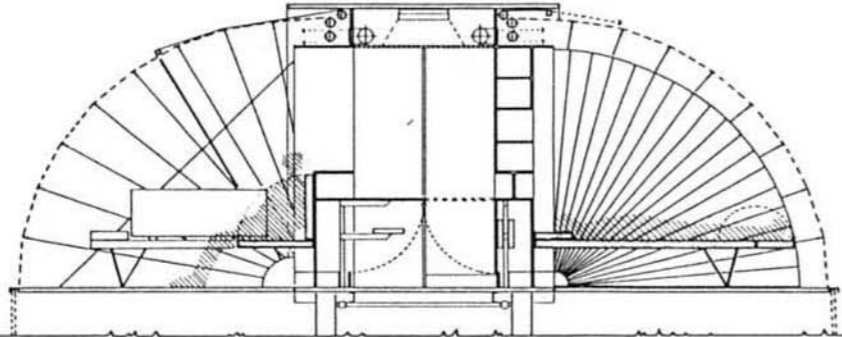
PRINCIPE



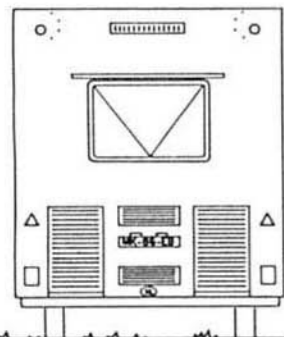
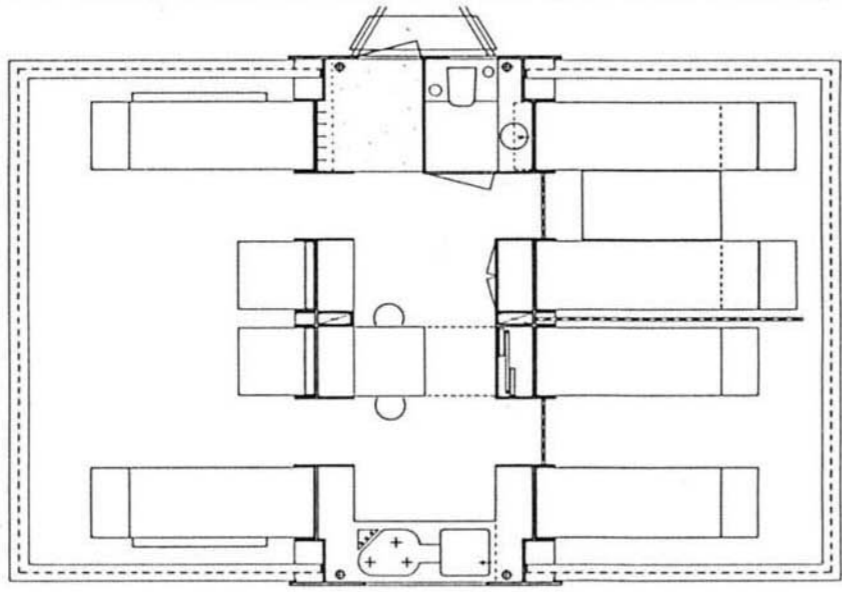




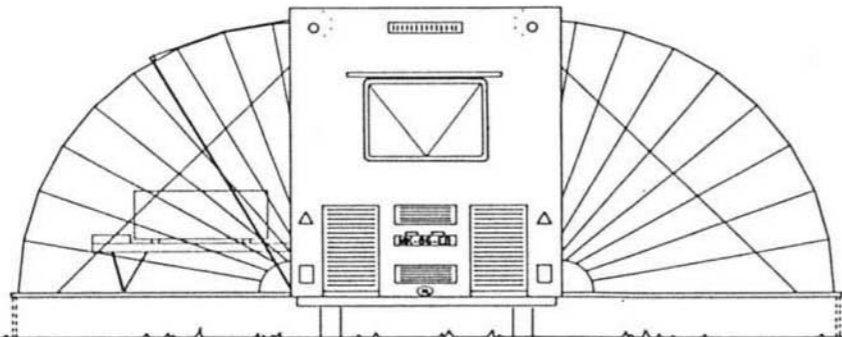
DOORSNEDE



PLATTEGROND



AANZICHT



D I C H T O P E N





