

Location >
Maasland, The Netherlands

Design >
Böhlingk architectuur

Area >
2.20 x 4.40 x 2.90 m,
unfolded 6.60 x 4.40 x 2.90 m

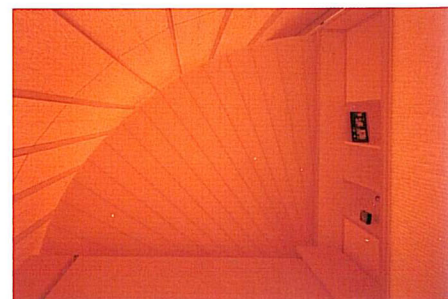
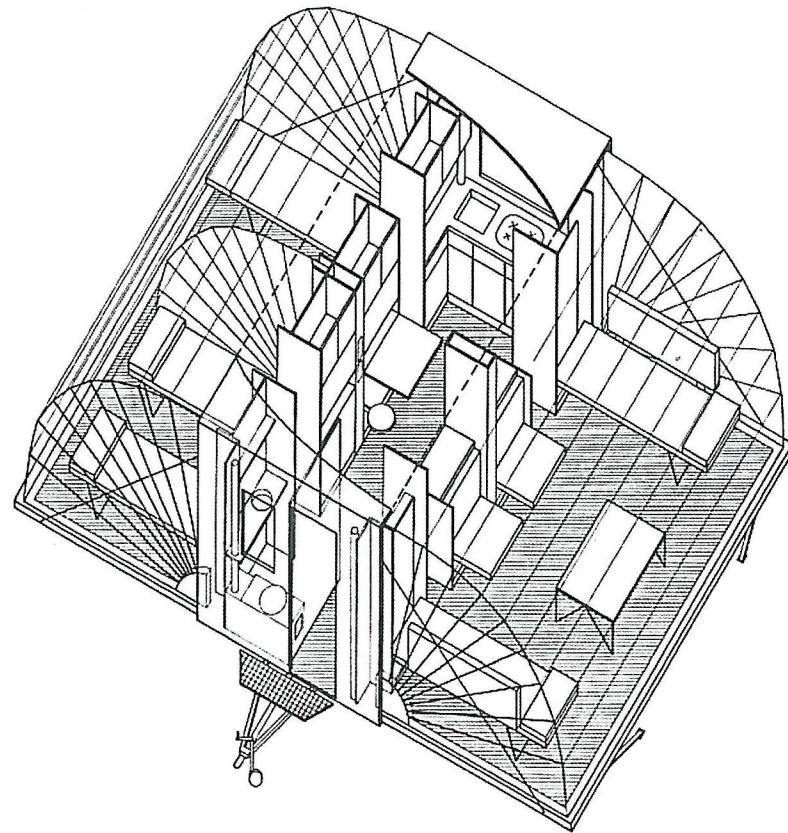
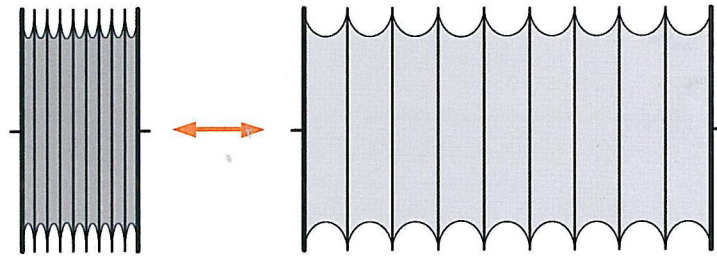
Photography >
Roos Aldershoff, Amsterdam



MARKIES

The Markies (Dutch for "awning") is a caravan, or a mobile home, that folds out by a motorized device to triple its floor area at its destination.

The side walls descend to create two new zones for living. One zone, the living-room/terrace, is covered by a transparent awning which in fine weather can be left open. The other zone, the bedroom, is covered by an opaque awning, and can be split into two parts. Kitchen, dining space and bathroom are situated in the solid central area. The furniture was specially designed for the caravan and can be folded up in part.



The side walls descend to create two new zones for living. One zone, the living-room/terrace, is covered by a transparent awning which in fine weather can be left open. The other zone, the bedroom, is covered by an opaque awning, and can be split into two parts.

